



15370 Barranca Parkway
Irvine, CA 92618-2215
USA

OMNIKEY®

Smart Card Readers (USB, ExpressCard and PCMCIA)

Base Models: 3121, 3021, 1021, 6121, 4321, 4040, 3821,
3621, 5321, 6321, 5325, 5125, 5121, 7121, 6221

USER GUIDE

3121-905-ENEN, Rev A.3

April 2011

© 2008 - 2011 HID Global Corporation. All rights reserved.

This guide describes the OMNIKEY® Smart Card Reader installation under Windows® XP SP3.

Three types of installation exist:

- Unattended (preferred installation)
- Automatic (internet connection required)
- Manual

Unattended

The Unattended installation is the preferred method. Unattended installation files are found at www.hidglobal.com/omnikey. Optionally, obtain these files from an installation CD (if available).

1. To download the latest OMNIKEY Unattended setup drivers, go to: www.hidglobal.com/omnikey, and select **Driver Downloads**.
2. Select your OMNIKEY product and operating system.
3. From the list, select the **Unattended Setup Installer** and confirm the license agreement.
4. Double-click the executable file and follow the instructions displayed in the setup window.

Note: In addition, download API drivers. The SYNC-API is often required for applications with memory or contactless cards. While the CT-API is often required for PinPad reader use (electronic signature applications), as well as health care applications.

In standard installations, installing these APIs is suggested.

CAUTION:

- **For driver installation local administration rights may be required.**
 - **Do not plug-in the OMNIKEY reader into your computer until setup is complete.**
5. Execute the Unattended Setup.EXE file and follow the Install Wizard instructions.
Note: For uninstalling the OMNIKEY drivers, restart the setup or (from the control panel) use **Add/Remove Programs**.
 6. After finishing the installation, plug-in your reader to the port (USB, ExpressCard, or PCMCIA).
 7. Windows automatically detects and installs the new hardware connected to the port (USB, ExpressCard, or PCMCIA).

Automatic

Ensure your computer has an online connection to the Internet.

1. Connect the reader to the computer port (USB, ExpressCard, or PCMCIA).
2. Windows detects the new hardware connected to the port (USB, ExpressCard, or PCMCIA) and requests the drivers.
3. After the **Windows Hardware Wizard** opens. Windows requests to connect to Windows Update to search for software, click **Yes, this time only**.
4. The OMNIKEY reader automatically is recognized and the appropriate driver installed through Windows Update.

The OMNIKEY reader is ready for use.

Note: This OMNIKEY Reader is CCID compliant, therefore, you can use a generic Windows CCID driver to operate the reader. However, a generic driver does not allow you to utilize the readers advanced features and functions.

Proceed to the **Diagnostic Tool** section for testing the installation.

Manual

For manual driver installation, local administration rights may be required.

Original OMNIKEY drivers must be locally available on your computer (for example, after internet download or from a CD).

1. To download the latest OMNIKEY drivers, go to: <http://www.hidglobal.com/omnikey>, and select **Driver Downloads**.
2. Select your OMNIKEY product and operating system.
3. From the list, select the driver for download and confirm the license agreement.

Note: In addition, download API drivers. The SYNC-API is often required for applications with memory or contactless cards. While the CT-API is often required for PinPad reader use (electronic signature applications), as well as health care applications.

In standard installations, installing these APIs is suggested.

4. After downloading the self-extracting file, execute the file to extract the drivers to the local hard drive (default path **c:\Omnikey**).
Note: Drivers have not yet been installed.
5. Select the driver location, click **Next**.

- Once the drivers are stored on the computer, connect the OMNIKEY reader to the port (USB, ExpressCard, or PCMCIA) and start the installation process. When the Windows Hardware Wizard requests for the driver, select **Install from a list or specific location**.
- Check **Include this location in search** and specify the location where the drivers are stored (for example: **C:\Omnikey\5x21_V1_2_0_5**). Click **Next**. When installation is complete, click **Finished**.

Note: If using unsigned BETA drivers, choose the **Don't search, I will choose the driver to install** radio button.

After finishing the installation your OMNIKEY Smart Card Reader is ready for use.

Installation Check

Ensure your device is recognized and listed in the Windows Device Manager dialog as OMNIKEY 5x21 in the **Smart Card Reader** section.

Note: This OMNIKEY Reader is CCID compliant, therefore, you can use a generic Windows CCID driver to operate the reader. However, a generic driver does not allow you to utilize the readers advanced features and functions.

- Go to the device manager:
Start > Settings > Control Panel. Click **System**.
- From the **System Properties** dialog, select the **Hardware** tab and click **Device Manager**. Expand the **Smart Card readers** option to ensure that OMNIKEY 5x21 is found.

Proceed to the **Diagnostic Tool** section for testing the installation.

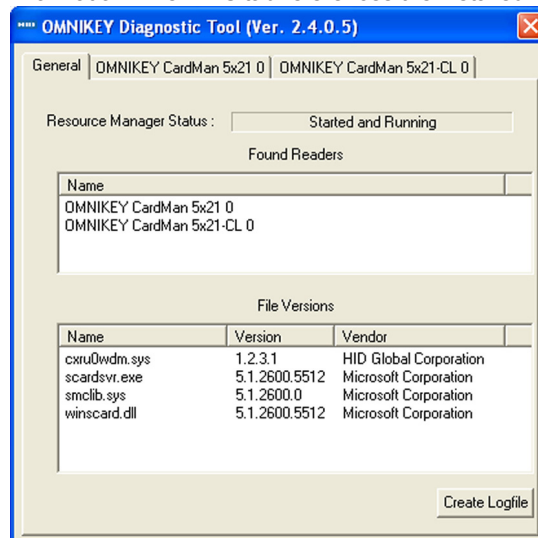
Diagnostic Tool

- Download the latest OMNIKEY Diagnostic tool, by going to: <http://www.hidglobal.com/omnikey>. Select **Driver Downloads**.
- Select your OMNIKEY product and operating system. Choose to download the OMNIKEY Diagnostic tool and confirm the license agreement. When download is complete, click **Run**.

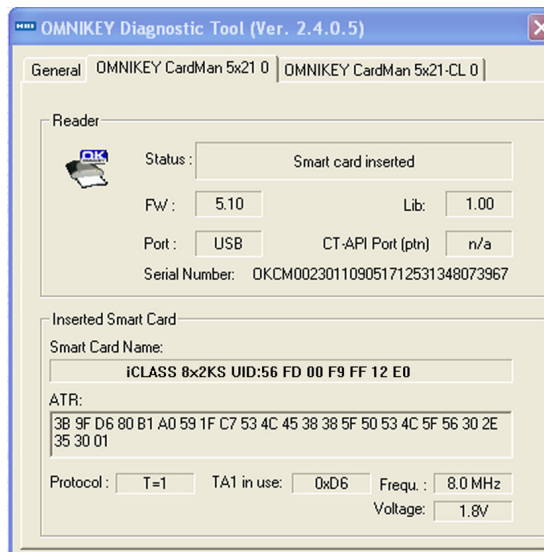
Note: The Diagnostic tool only works with OMNIKEY readers. For older drivers, the Diagnostic tool is also available from the Control Panel.

Start the OMNIKEY Diagnostic tool from the program shortcut, go to **Start > Programs > OMNIKEY**.

Within the Diagnostic tool, the **General** tab lists all the connected OMNIKEY Smart Card readers, along with driver information. The **APIs** tab references the installed API DLLs.



Additional tabs show connected reader details (per the available contact and contactless interface).



For a functional test, insert a working smart card into the reader. As a result, an ATR string and other card details display.

<p>North America 15370 Barranca Parkway Irvine, CA 92618 USA</p>	<p>Asia Pacific 19/F 625 King's Road North Point, Island East Hong Kong</p>	<p>Europe, Middle East & Africa Phoenix Road Haverhill, Suffolk CB9 7AE England</p>
-------------------------------------------------------------------------------------	------------------------------------------------------------------------------------------------	------------------------------------------------------------------------------------------------------------

www.hidglobal.com
Technical Support: support.hidglobal.com