

Electronic scales VEDIA VDS...C and VDI...C

1. Operation with already programmed articles

1.1 Select an article

After the articles are programmed at the scale, an article from the memory can be selected: The scale is in weighing mode; key PLU is pressed to switch to “operation with articles” mode and then the number of the article is selected by the numeric keypad. The selected number is confirmed by pressing PLU again. After number confirmation, scale returns to weighing mode and the price of the selected article is shown on the second row of the display. When an article is selected the scale has to be loaded; then it has to be unloaded to allow select another article.

1.2 Delete an article from the scale memory

To delete an article from the scale memory you should:

The scale is in weighing mode; key PLU is pressed to switch to “operation with articles” mode and the number of the article to be deleted is selected by the numeric keypad; then press key MENU. Using up and down arrows, select submenu “del.PLU” and press Enter – the selected article is deleted from the memory.



Table.1 – Delete an article from the memory

1.3 Delete all articles from the scale memory

To delete all articles from the scale memory you should:

The scale is in weighing mode; key PLU is pressed to switch to “operation with articles” mode and then press key MENU. Using up and down arrows, select submenu “del.ALL” and press Enter to confirm the delete of all articles. After deleting all data from the memory of the scale, at the end of operation a buzz sound is heard and the scale restarts; all articles are deleted.



Table. 2 – Delete all articles from the memory

1.4 Print data from a measuring

There are two printing modes – manual (press key PRN) and automatic (automatically after the load is put on the scale and the stable-position indicator lights up). The printing mode is selected for each article during its programming.

- Print in manual mode – after selecting an article and placing the load on the scale press key PRN; all programmed data for the article from the memory is sent to the printing device (label printer) and labels are printed according to the programmed form. Sending data is done only after the stable position indicator lights up.

- Print in automatic mode – if the option for automatic print is selected for an article, then after placing the load and lighting up of the stable-position indicator, the scale automatically sends the data for printing without pressing key PRN.

2. Programming label forms for operation with electronic scales VEDIA VDS...C and VDI...C

Electronic scales VEDIA are programmed to operate with printing devices (label printers) Datecs LP50, Datecs LP1000, ZEKA LP, as well as all compatible with them devices. While connecting scale with printer Datecs LP1000 it has to be in compatible to Datecs LP 50 mode (Instructions for operation and settings). After the printing command, the scale sends to its second serial interface (Port 2) the following variables:

Variable	Parameter	Extend
V00	Item name	32 symbols
V01	Weight	6 symbols
V02	Price/kg	7 symbols
V03	Price to pay	8 symbols
V04	Barcode	12 symbols
V05	Durability	6 symbols
V06	PLU number	6 symbols
V07	PLU code	6 symbols
V08	Lot	6 symbols
V09	Note 1	32 symbols
V10	Note 2	32 symbols
V11	Note 3	32 symbols
V12	Note 4	32 symbols
V13	Note 5	32 symbols

Programming the label form has to take in consideration the name and extend of the referred variables and to be done according to the instructions for the printing device and software for programming the labels.

3. Programming articles in the scale

Programming articles in the scale is done via computer and an additional software (PGM Vedicom) bought together with the scale. After installing the software, the scale is connected to one of the serial (COM) ports of the computer and the programming mode for articles is started. Communication between the scale and the computer is carried out via the first serial port (Port1) of the scale, through the scale cable bought together with the scale.

3.1 Scale settings to connect with PC

After the scale is started in normal (weighing) mode, press key PLU and enter into select article mode; PLU is shown on the first row, the number of the current article is shown on the second row (0000 in case of no selected article or lack of program articles at all). Press key MENU to enter into menu for operation with articles; PC is shown on the display. The menu structure is as follows:

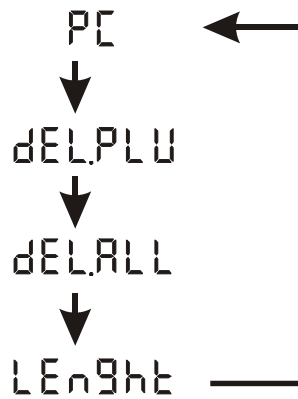


Figure. 3 – Structure of the menu for operation with articles

Select the size of the data field for every article by entering into submenu Length. One of the following settings can be selected:

Data field	Maximum number of saved articles in the scale
128 b	4000 articles
256 b	2000 articles
512 b	1000 articles
1024 b	500 articles

Submenu LEnght has the following structure:

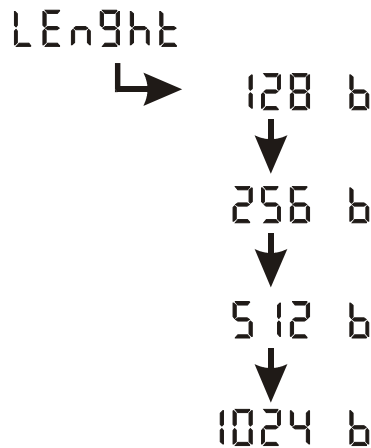


Figure. 4 – Submenu Length structure

The selected setting is confirmed by key ENTER; the scale deletes all saved articles in the memory and starts operating with the new size of the data field. Enlargement of the data field for each article gives opportunity to enter more information about each article e.g. additional fields with text but diminish the maximum number of saved articles in the memory.

Attention!!! – With this setting the scale deletes all data saved in the memory. Even if you confirmed the same size of the data field, the data from the memory will be deleted and it must be programmed again!!!

After the preferable size of the data field is set, the scale must be started in the programming articles mode. From the menu for operation with articles you select submenu PC; confirm with key Enter; then the display shows 9600 (the speed of data transfer). With up and down arrows you can select the speed (9600bps, 19200bps or 38400bps); confirm with key ENTER and the scale enters in the programming articles mode (display shows UPDATE SCALE

DATA) and new data from the computer must be set. After completion of data transfer, press key Menu to exit this mode; the scale is restarted automatically. Then it is ready for operation.

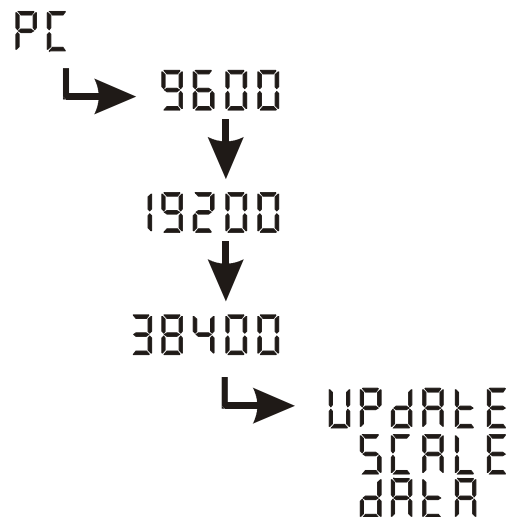


Figure. 5 – Submenu PC-structure

3.2 Software (PGM Vedicom) settings for connection with electronic scale VEDIA VDS...C and VDI...C

After starting PGM, the initial screen of the program is loaded as it is shown on Fig.6. Before programming articles the following settings have to be done:

- From the falling menu Device Type (marked as 1 on Fig.6) select VEDICOM VEDIA SCALE.

- In the field Com port N: (marked as 2 on Fig.6), the COM port is selected for connection with the scale.

- From the falling menu of the speed transfer (marked as 3 on Fig.6) select the preferable data speed transfer. The selected speed must be the same as the selected in starting the scale in programming articles mode. (3.1).

- Press key Parameters (marked as 4 on Fig.6) and the screen for parameters settings is opened (it is shown on Fig. 7). In this screen you select the values of the following parameters in text mode: “ArticlesCount” – number of articles (marked as 1 on Fig.7), “MaxPLU” – maximal number of PLU (marked as 2 on Fig.7) and “MemoryPackageLen” – the size of the data field (marked as 3 on Fig.7). Values of these parameters depend on programmed length of the data field at scale in starting the scale in programming articles mode. (3.1). According to the setting of the scale these parameters can have the following values:

Value of Length in scale	Values of the parameters in PGM		
	ArticlesCount	MaxPLU	MemoryPackageLen
128 b	4000	4000	1
256 b	2000	2000	2
512 b	1000	1000	3
1024 b	500	500	4

After the preferable values are programmed they must be confirmed with key OK.

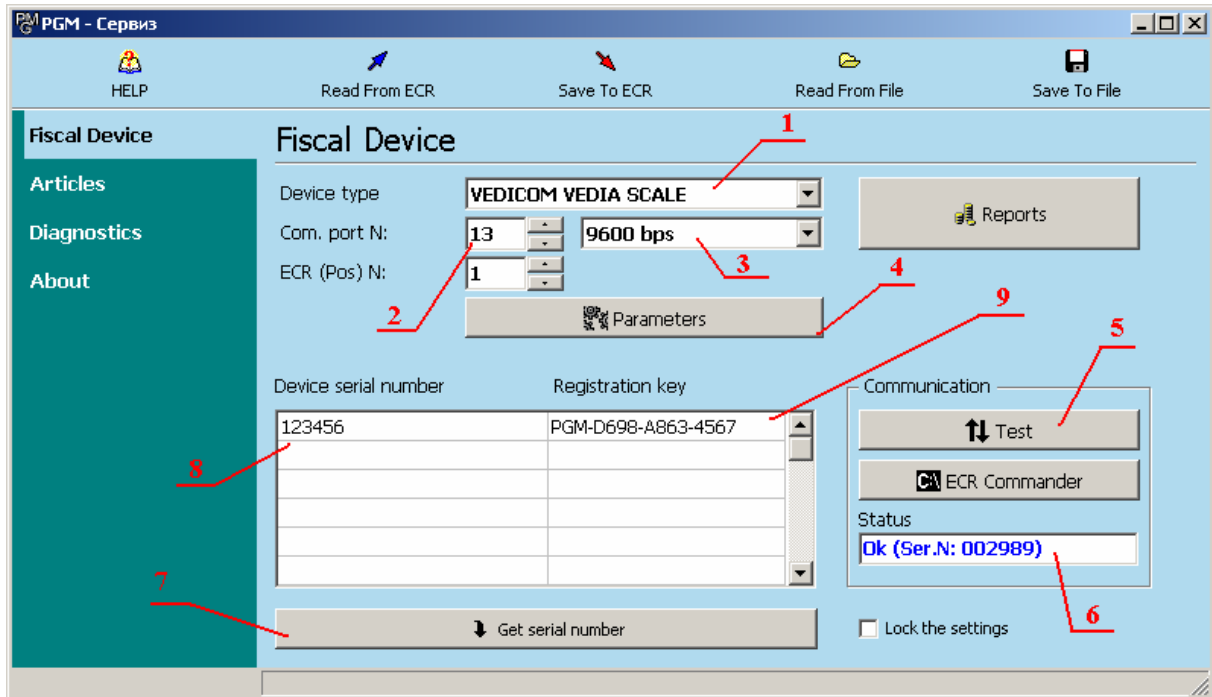


Fig.6. – Initial screen of PGM

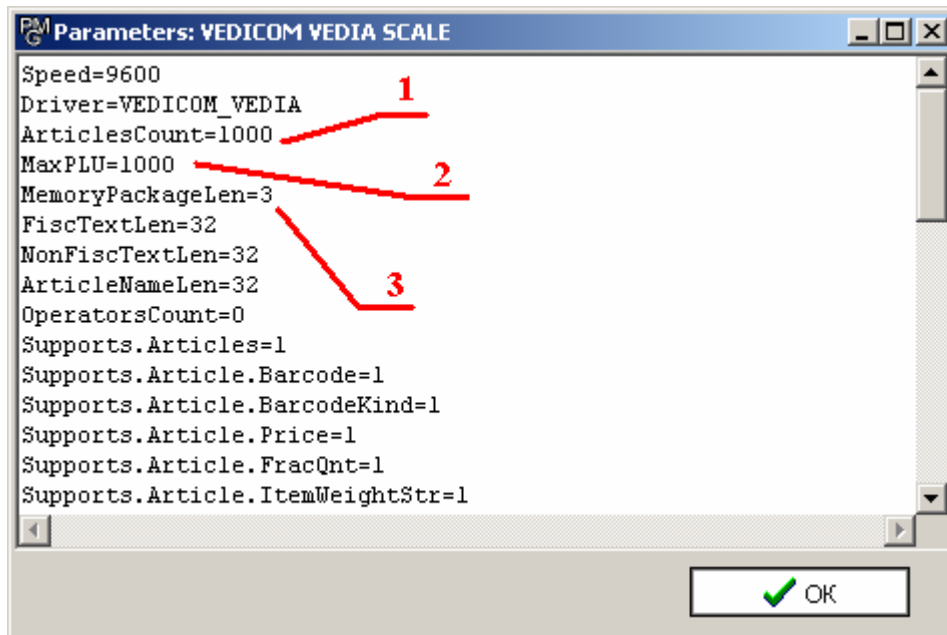


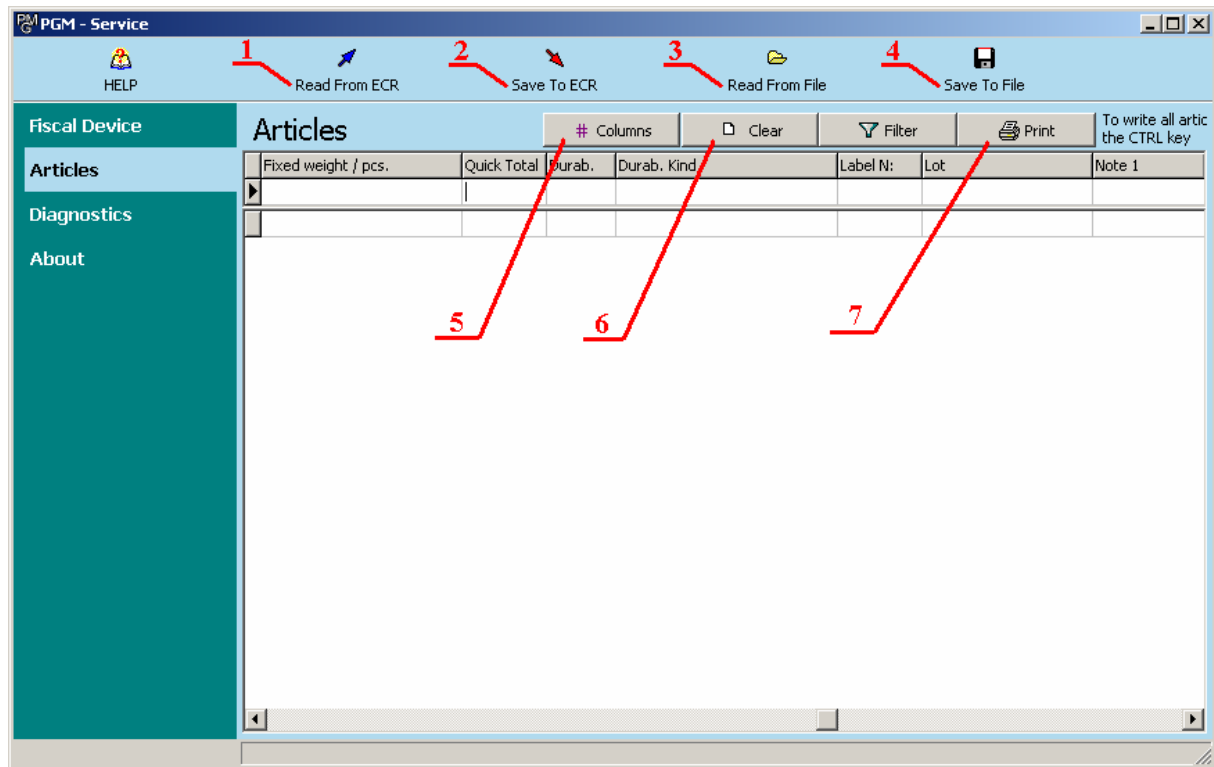
Fig. 7 – Parameters

- Enter the serial number of the scale in Device Serial Number field (marked as 8 on Fig.6). The serial number is written on the manufacturer's mark. Pressing key Get Serial Number (marked as 7 on Fig. 6) the serial number is shown automatically without necessity to be entered manually.
- The registration key for the scale is entered together with the serial number in Registration Key field (marked as 8 on Fig.6). Registration key is received when software is purchased. Several serial numbers and registration keys of a few devices (scales) can be entered.
- After all parameters are set, press key TEST (marked as 5 on Fig.6) to check the communication between the scale and the computer. If everything is fine, a blue OK followed by the serial number of the scale appears in Status field.

With starting PGM again, the settings are saved and they don't have to be done a again. Change in the settings is required with there is a change in scale settings (change of LEHght, change of data transfer speed or connecting the scale to another COM port of the computer).

3.3 Programming, save and read articles in PGM Vedicom

Programming, save, read and change articles is performed in screen Articles of PGM (take a look at Fig. 8).



Фиг. 8 – Articles screen of PGM Vedicom

Key functions in the Articles screen are as follows:

- 1 – Read From ECR – Read the saved articles from the scale;
- 2 – Save To ECR – Save the programmed articles at the scale;
- 3 – Read From File – Read the saved articles from of file;
- 4 – Save To File – Save the programmed articles in a file;
- 5 - #Columns – Pressing the key opens the screen to select columns to visualize (Fig. 9). In this screen you can select which fields with data for the articles to be visualized.
- 6 – Clear – Clear all articles. **Pressing this key deletes articles saved in the scale as well!!!;** To delete a row of the programmed data, point at a field in that row with the cursor and then press Ctrl + Del.
- 7 – Print – print the programmed data.

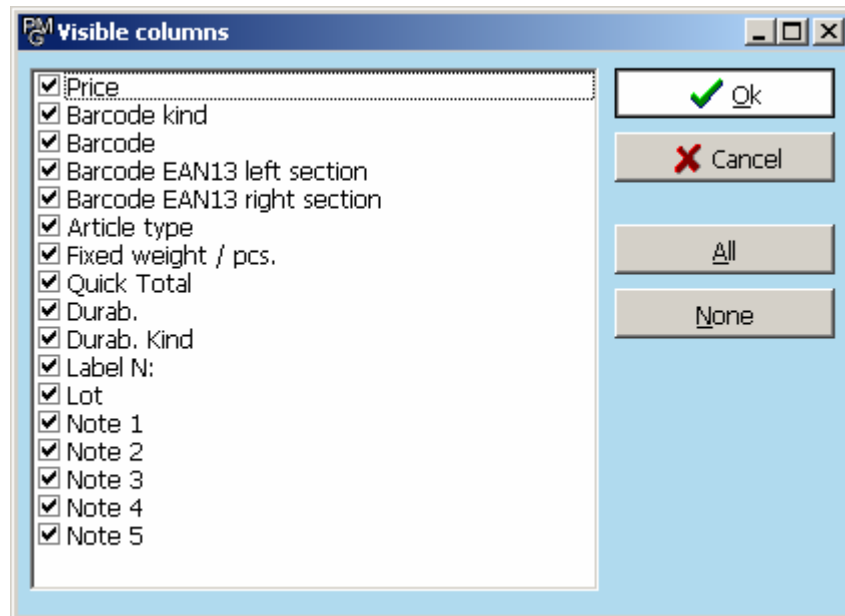


Fig.9 – Screen to select columns to visualize.

For each article data can be programmed in the following fields:

- 1) **Code** – enter the code of the article – max 6 symbols
- 2) **Name** – enter the name of the article – max 32 symbols
- 3) **Price** – enter unit price of the article – max 7 symbols
- 4) **Barcode kind** – from the falling menu select one of the following types: EAN 13, EAN 13 with checksum, EAN 8, UPC A, Code 39, Code 39 with checksum, Code 128, EAN 128
- 5) **Barcode** – enter the barcode or only the prefix of the barcode (EAN 13)
- 6) **Barcode EAN 13 left section (L-column)** – when barcode EAN 13 is selected from the following menu, one of the following options is used to encode the left section of the barcode:
 - From Barcode field – take the programmed value in Barcode field
 - PLU – encode the PLU number
 - Lot – encode the programmed consignment in Lot field
 - Unit price – encode the unit price of the article
 - Price to pay – encode the “price to pay” of the article
 - Weight (number) – encode the weight of articles are to be measured and the number of articles that are sold in number.
- 7) **Barcode EAN 13 right section (R-column)** – when barcode EAN 13 is selected from the following menu, one of the following options is used to encode the left section of the barcode:
 - From Barcode field – take the programmed value in Barcode field
 - PLU – encode the PLU number
 - Lot – encode the programmed consignment in Lot field
 - Unit price – encode the unit price of the article
 - Price to pay – encode the “price to pay” of the article
 - Weight (number) – encode the weight of articles are to be measured and the number of articles that are sold in number.
- 8) **Article type** – From the falling menu select the type of the article:
 - Weighing – article is to be measured
 - Fixed weight – article is with fixed weight
 - Number – article is sold in number

- 9) **Fixed weight / number** – if in Article type field is set that article is with solid weight or in number then enter accordingly solid weight or number in this field.
- 10) **Printing mode (may also appear as “Quick Total”)** – select the printing labels mode from the falling menu:
 - Automatically – the labels is printed automatically after placing the load on the scale and the stable-position indicator lights up.
 - PRN – to print the label press key PRN after the stable-position indicator lights up.
- 11) **Durability** – enter the durability of the article
- 12) **Durability kind** – enter the type of durability – Hour, Day, Month or Year – max 6 symbols
- 13) **Label N:** – Enter the name of the label form from the programmed ones in the labeling printer to print the data for the article.
- 14) **Lot** – Enter the consignment number of the article – max 6 symbols.
- 15) **Note 1** – additional field for text – max 32 symbols
- 16) **Note 2** – additional field for text – max 32 symbols
- 17) **Note 3** – additional field for text – max 32 symbols
- 18) **Note 4** – additional field for text – max 32 symbols
- 19) **Note 5** – additional field for text – max 32 symbols