



Rugged Mobile Computer PT21 / PT26

Portable Innovation Technology
The Power Behind Your Rugged Mobile Computing

Application

If you are looking for a mobile computer that you can collect data for a whole day, your search is over. PT21 / PT26 is the answer to your request. It is just about 275g (normal battery), long battery life, big screen (3.2" diagonal) and yet comfortably to hold .

The PT21 / PT26 mobile computer is a neat package that packs with functions your customers needed in major industries, namely retail, healthcare, warehouse tracking and logistics. It is rugged (IP64 and 1.2 meters drop), fully connected (Bluetooth, WiFi b/g, WWAN) and has various options that you can customize for your customers' needs (multiple scan engines and OS support).



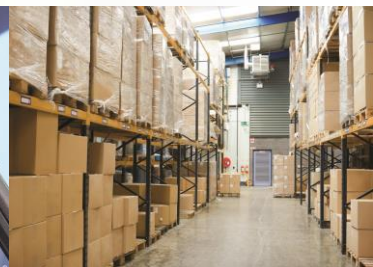
Retail



Healthcare



***Warehouse
tracking***



Logistic

Rugged yet ergonomic



Reinforced polycarbonate structure meets the IP64 protection class and withstands 1.2m drops multiple times across wide range of temperature.



Big color display (3.2 color QVGA TFT) and yet comfortably grabbed by users perfect balance.



Perfect balance of weight with normal and 1.5x capacity battery.



Rubber sealing prevents the ingress of dust and water to meet IP64 standard.



Collecting data while stay connected



Multiple scanning technology supported.
CMOS Imager, CCD, Laser scanner.



Bluetooth wireless communication for
connecting other Bluetooth enabled
peripherals e.g. mobile printers.



IEEE 802.11b/g radio with diversity antenna.



PT26 provides WWAN (GPRS /EDGE /
WCDMA / HSDPA data communication only)
radio option enables wide rang of field
based applications



Bottom connector with serial, USB and
power output (+5V) for communication of
external accessories.

Flexible options for your customers



Optional 1D CCD / 1D Laser / 2D CMOS imager to fit customers' needs.



Optional radio options (WLAN, WWAN, MiFARE) to fit customer's needs and budgets.



Multiple OS support for maximum application compatibility: Windows CE and Android.



Default numeric or customized keypad according to customers' requirements.



512MB RAM / 4GB Flash with up to 32G Micro-SD card support.



Bottom connector with serial, USB and power output (+5V) allowing future expansion modules.

PT21 Specifications



Physical

Dimensions:	148 mm(L) x 73 mm(W) x 27.5 mm(D)
Weight:	Standard battery: 254g
Display:	3.2 inch full QVGA (240x320) TFT display with backlight
Touch Panel:	Glass analog resistive touch
Backlight:	LED backlight
Battery:	Rechargeable Lithium Standard:3.7 V, 1920mAh Extended: 3.7V, 2880mAh
Expansion:	MicroSD slot
Connectivity:	Full speed USB
Warning:	Vibrate and LED
Keyboard:	26-key numeric in English
Audio:	Speaker

Performance characteristics

CPU:	Cortex A8 1GHz processor
Operating system:	Android 2.3 / 4, Windows CE 6.0
Memory:	512MB RAM, 4GB Flash
Interface:	3V UART, USB 2.0 Client

User Environment

Operating Temperature:	-10°C to 55°C
Storage Temperature:	-20°C to 60°C (w/o battery)
Humidity:	90% non-condensing
Drop Spec:	1.2 meters to concrete, multiple drops across wide range of temperature
Sealing:	IP64
Clock:	Integrated real time clock
Electrostatic Discharge (ESD) :	± 15 kV (air discharge), ± 8 kV (direct discharge)

Wireless PAN Data

Bluetooth:	Class II EDR 2.0; on-board chip antenna
-------------------	---

Wireless LAN Data

WLAN Radio:	IEEE 802.11 b/g
Data Rates Supported:	1,2,5.5,6,9,11,12,18,24,36,48 and 54Mbps
Operating Channels:	Channels 1-13 (2412-2472 MHz)
Transmission Power:	30mW (transmit) (line of sight open field test: 300 meters at 1 Mega bits per second)
Security:	WEP (40 or 128 bit), TKIP, AES, WPA2-PSK, WPA-PSK, WPA2 (EAP-TLS, EAP-PEAP)
Antenna:	Internal for WLAN
Option:	SUMMIT b/g

Data Capture Specifications

Options:	1D CCD Scanner 1D Laser Scanner 2D Imager
-----------------	---

Accessories



Single Slot Dock



Power Adapter



Charging cup kit



Stylus



Hand strap



1.5X 2880mAh
Lithium Polymer Battery
and
1.5X battery cover

PT26 Specifications



Physical

Dimensions:	148 mm(L) x 73 mm(W) x 27.5 mm(D)
Weight:	Standard battery: 255g
Display:	3.2 inch full QVGA (240x320) TFT display with backlight
Touch Panel:	Glass analog resistive touch
Backlight:	LED backlight
Battery:	Rechargeable Lithium Standard: 3.7 V, 1920mAh Extended: 3.7V, 2880mAh
Expansion:	MicroSD slot
Connectivity:	Full speed USB
Warning:	Vibrate and LED
Keyboard:	26-key numeric in English
Audio:	Speaker

Performance characteristics

CPU:	ARM9 400MHz processor
Operating system:	Android 2.3 / 4, Windows CE 6.0
Memory:	512MB RAM, 4GB Flash
Interface:	3V UART, USB 2.0 Client

User Environment

Operating Temperature:	-10°C to 55°C
Storage Temperature:	-20°C to 60°C (w/o battery)
Humidity:	90% non-condensing
Drop Spec:	1.2 meters to concrete, multiple drops across wide range of temperature
Sealing:	IP64
Clock:	Integrated real time clock
Electrostatic Discharge (ESD) :	± 15 kV (air discharge), ± 8 kV (direct discharge)

Wireless PAN Data

Bluetooth: Class II EDR 2.0; on-board chip antenna

Wireless WAN Data

WWAN Radio:	GPRS / EDGE / WCDMA / HSDPA
Frequency:	GPRS / EDGE (850, 900, 1800, 1900MHz), HSDPA / WCDMA (900, 2100MHz) data only

Data Capture Specifications

Options: 1D CCD Scanner
1D Laser Scanner
2D Imager

Accessories



Single Slot Dock



Power Adapter



Charging cup kit



Stylus



Hand strap



1.5X 2880mAh
Lithium Polymer Battery
and
1.5X battery cover



Rugged Mobile Computer
PT21 / PT26

Portable Innovation Technology
The Power Behind Your Rugged Mobile Computing

Tel: (852) 2310-2830

Email: sales@pitech.com

Address: Units 601-602, 6th Floor, Park Building, 476 Castle Peak Road, Cheung Sha Wan, Kowloon, HK